

Welcome to a walk through of the New Inn



A view of the car park from the patio



A view of the New Inn from the car



The new island



The countryside around us



A view of St Georges Park from the New Inn



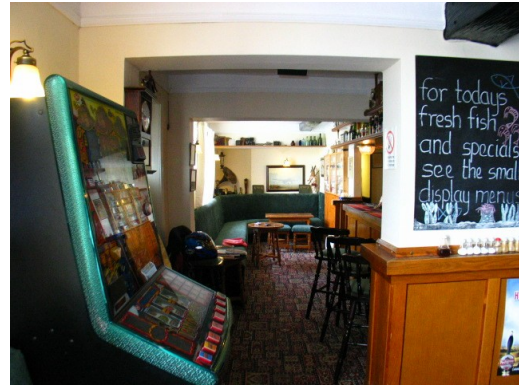
Entering the New Inn



From reception a look into the bar



Bar looking towards the restaurant



Looking into the snug bar



Looking back from the snug bar



From reception a look into the restaurant



Around the restaurant



Around the restaurant



Our old bread oven in the restaurant



Looking back towards the bar



Our old Welsh dresser & the corridor to the pool room



The pool room also has a bar
billiards table
Television and a dart board



The dart board and billiards table



A view back to the corridor





On our first floor we have four accommodation bedrooms
From the stairs going left we have our only single room



A look into the single room



Turn right from the stairs and enter the passage to our other three bedrooms



The first of our twin rooms



The second twin room



And our last room is a triple or family room

This major part of the New Inn dates back to around 1760. Due it's construction and layout, En suite accommodation is not possible. A private toilet and two showers are located at the end of the passage

[VIEW IN PDF FORMAT](#)